

Moab Grid Suite®

A Grid Management Solution

Overview

Moab Grid Suite is a powerful grid-workload management solution that includes scheduling, advanced policy management, and tools to control all the components of advanced grids. Unlike other grid solutions, Moab Grid Suite connects disparate clusters into a logical whole, enabling grid administrators and grid policies to have sovereignty over all systems while preserving control at the individual cluster.

Moab Grid Suite comprises powerful applications that allow organizations to consolidate reporting; information gathering; and workload, resource, and data management. Moab Grid Suite delivers these services in a near-transparent way: users are unaware they are using grid resources—they only know they are getting work done faster and more easily than ever before.

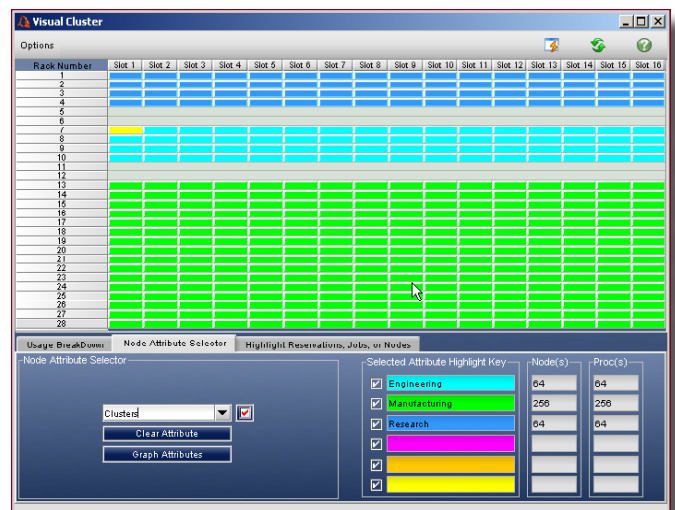
Moab manages many of the largest clusters and grids in the world. Moab technologies are used broadly across Fortune 500 companies; in fact, Moab is licensed on more Top500 compute resources than any competitor's solution. Cluster Resources is a globally trusted ISV, and Moab prices can be one-half to one-fourth the price of other tools on the market today.

Components

- ▶ **Moab Workload Manager® for Grids**—a policy-based workload-management and scheduling engine
- ▶ **Moab Grid Manager®**—a powerful graphical cluster-administration interface, monitor, and reporting tool
- ▶ **Moab Access Portal® for Grids**—a Web-based end-user job-submission and management portal

Benefits

- ▶ Ability to move quickly from cluster to optimized grid with unified management across heterogeneous clusters
- ▶ Intelligent scheduling that ensures jobs start and run in the fastest time possible by selecting optimal resources
- ▶ Flexible policy and event engine adjusts workload processing at both grid and cluster level
- ▶ Grid-wide interface and reporting tools to view grid resources, status and usage charts, and trends over time for capacity planning, diagnostics, and accounting
- ▶ Control—allows different business groups to access and view grid resources, regardless of physical or organizational boundaries, or alternatively restricts access to resources by specific departments or entities



The *Visual Cluster* view in Moab Grid Manager makes cluster and grid management easy and efficient.

Key Facts—Moab Grid Suite

Grid Control with Automated Tasks, Policies, and Reporting

- ▶ Guarantee that the most-critical work runs first with flexible global policies that respect local cluster policies but continue to support grid service-level agreements
- ▶ Ensure availability of key resources at specific times with advanced reservations
- ▶ Tune policies prior to roll-out with cluster- and grid-level simulations
- ▶ Use a global view of all grid operations for self-diagnosis, planning, reporting, and accounting across all resources, jobs, and clusters

Cluster Sovereignty and Trusted Sharing

- ▶ Guarantee that shared resources are allocated fairly with global policies that fully respect local cluster configuration and needs
- ▶ Establish trust between resource owners through graphical usage controls, reports, and accounting across all shared resources
- ▶ Maintain cluster sovereignty with granular settings to control where jobs can originate and be processed
- ▶ Establish resource ownership and enforce appropriate access levels with prioritization, preemption, and access guarantees

Increase User Collaboration and Productivity

- ▶ Reduce end-user training and job management time with easy-to-use graphical interfaces
- ▶ Enable end users to easily submit and manage their jobs through a Web browser, minimizing the costs of catering to a growing base of needy users
- ▶ Collaborate more effectively with multi-cluster co-allocation, allowing key resources to be reserved for high-priority projects
- ▶ Leverage saved job templates, allowing users to submit multiple jobs quickly and with minimal changes

Process More Work in Less Time to Maximize ROI

- ▶ Achieve higher, more consistent resource utilization with intelligent scheduling, matching job requests to the best-suited resources
- ▶ Use optimized data staging to ensure that remote data transfers are synchronized with resource availability to minimize poor utilization
- ▶ Achieve better job performance with automatic learning that improves scheduling decisions based on historical workload results
- ▶ Allow local cluster-level optimizations of most grid workload

Unify Management Across Independent Clusters

- ▶ Unify management across existing internal, external, and partner clusters—even if they have different resource managers, databases, operating systems, and hardware
- ▶ Get out-of-the-box local area grid and wide area grid support
- ▶ Manage secure access to resources with simple credential mapping or interface with popular security tool sets
- ▶ Leverage existing data-migration technologies such as SCP or GridFTP

Try Moab for 30 days with full technical support—absolutely free. For more information, please contact us.

Download . . . www.clusterresources.com/pages/products/evaluate.php

North America, Latin America, Asia-Pacific +1 (801) 717-3700

U. S. toll-free +1 (888) 221-2008

Europe, Middle East, Africa +44 (0) 1483 243578

Email info@ClusterResources.com

